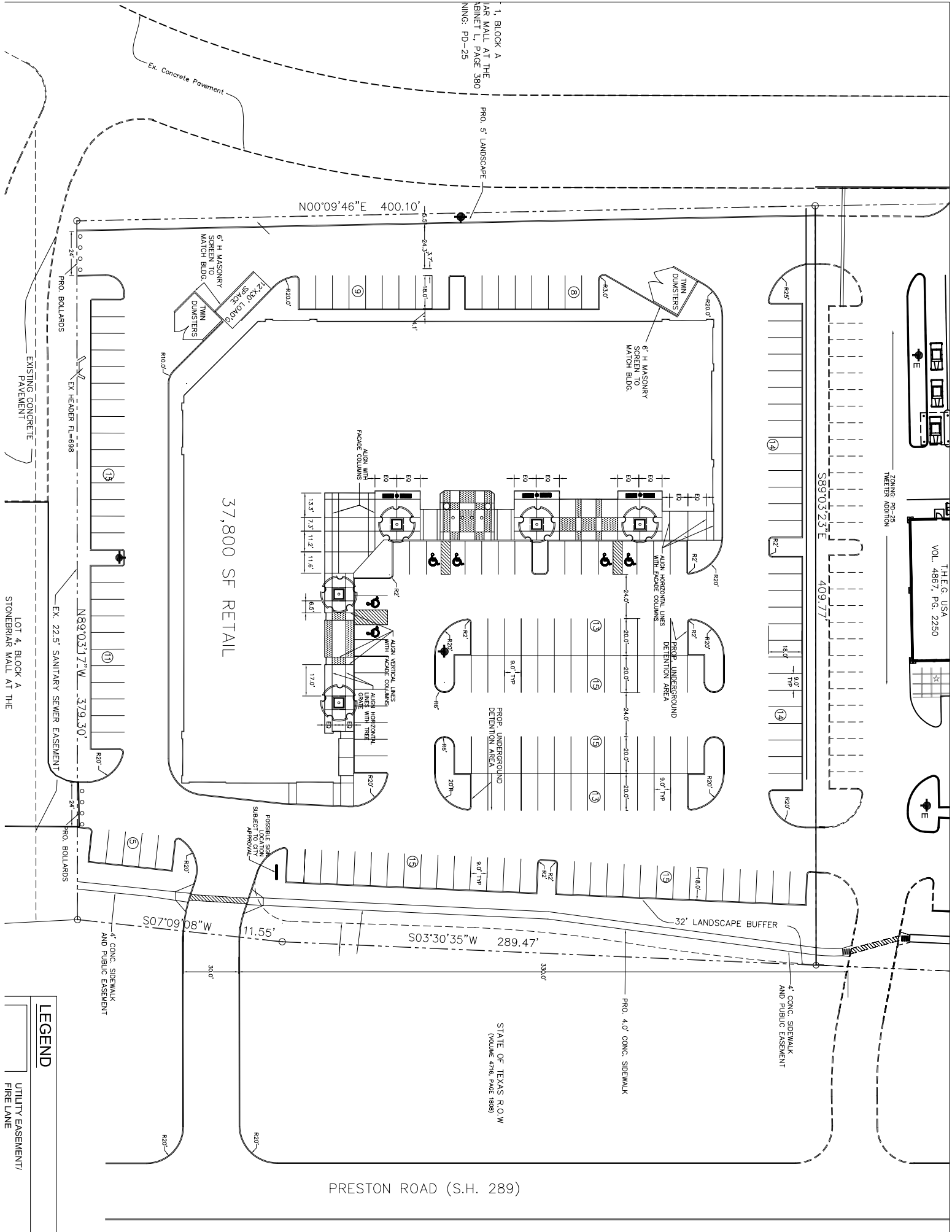


ZONING PD-25  
METER ADDITION

1, BLOCK A  
PAR MALL AT THE  
ABINET L, PAGE 380  
ANNING: PD-25



37,800 SF RETAIL

STATE OF TEXAS R.O.W  
(VOLUME 4760, PAGE 1889)

PRESTON ROAD (S.H. 289)

**LEGEND**

- UTILITY EASEMENT/
- FIRE LANE

